



Accessibility information

Welcome to OBORO!

OBORO is a centre dedicated to production and presentation of art, contemporary practices and new media. We are located on the second and third floors of the building at 4001 Berri Street, in the Plateau Mont-Royal.

www.oboro.net

OBORO strives towards removing structural barriers to access and participation, and is committed to treating all artists and members of the public with equity. The majority of our public events are free and child-friendly.

The purpose of this document is to help visitors familiarize themselves with our venue before their visit.

If you have any questions that are not answered in this document, you can contact OBORO at 514 844-3250 or oboro@oboro.net. If you are Deaf or hearing impaired and wish to communicate with us over video using sign language, please contact us using the SRV Canada VRS service:

<https://srvcanadavrs.ca/en>

We hope this document will be helpful to prepare your visit to OBORO and welcome your feedback to improve its contents.

Contents:

| | |
|---|----|
| Getting to OBORO..... | 2 |
| Entering the building and finding OBORO | 6 |
| Visiting OBORO’s exhibition space..... | 8 |
| Washrooms..... | 11 |
| Quiet Space..... | 12 |
| Visiting OBORO’s New Media Lab..... | 13 |
| Visitor Feedback | 15 |

Getting to OBORO

OBORO's address is 4001 Berri Street, Montreal, H2L 4H2. The closest major intersection is Saint-Denis/Duluth. On Berri Street we are located just south of Duluth Avenue.

We share our building with other art organizations such as Ada X (formerly Studio XX) and GIV (Groupe Intervention Vidéo).

There is a blue sign above the entrance of the building, visible from Duluth. More signage is displayed on the door and on the outside wall, but is not so visible from far away. This is what the signage looks like from the street:



Visitors are advised to arrive by public transportation, carsharing, bicycle, foot, or taxi if possible.



Accessibility information

Arriving on Foot

OBORO is located at 4001 Berri, between Duluth and Roy, two streets east of St-Denis. Visitors coming from St-Denis in the winter may encounter icy sidewalks on Duluth. Sidewalks on Berri tend to be cleared of snow between Roy and Rachel. The walking terrain in this area of the Plateau Mont-Royal is mostly flat.

Arriving by Bicycle

There are numerous bike paths in the vicinity of OBORO. You may consult a map of bike paths here: <https://exo.quebec/en/trip-planner/bike/bike-paths>
A map of Bixi (bike sharing) stations is available here: <https://secure.bixi.com/map/>

Closest Metro Stations

Metro: Orange line + 9-minute walk.

Option 1: Mont-Royal Station

Take the orange line to Mont-Royal station. Station details can be consulted here: <https://www.stm.info/en/info/networks/metro/mont-royal>

Take the main exit and turn right onto Berri Street. Walk 700 metres down Berri Street towards Rachel. You will cross the following intersections: Marie-Anne, Rachel and Duluth. OBORO will be on your left, just after Duluth.

The walk from Mont-Royal metro station is mostly flat. There is a rough patch of potholes when traversing the paved entrance intended for bus traffic on Berri (right sidewalk). This walk takes approximately 9 minutes.



Accessibility information

Option 2: Sherbrooke Station

Take the orange line to Sherbrooke station. Station details can be consulted here: <http://www.stm.info/en/info/networks/metro/sherbrooke>

To reach OBORO, take the Berri East exit. Turn right as you exit and walk approximately 600m North on Berri Street. You will cross the following streets: Cherrier and Roy. OBORO will be on your right just before Duluth. The walk from this station is slightly elevated and takes approximately 8 minutes.

Arriving by Bus

Local bus routes include:

Bus 31 to St-Denis/Duluth

Bus 24 to Station Sherbrooke (Édicule Est)

Bus 29 to Rachel/St-Denis or Rachel/St-Hubert

Bus 97 to Station Mont-Royal

Arriving by Car

OBORO is located at 4001 Berri Street, between Duluth and Roy. Berri is a one-way street from North to South. To reach Berri Street, cars can from Duluth (East bound) or Rachel (East or West bound). There are no left turns onto Duluth or Rachel when travelling south on St-Denis.

Parking

Free parking around OBORO is available, but limited (many spaces are reserved for residents). Some paid parking is available on the street. Private parking spaces and their cost can be found on this website:

<https://en.parkopedia.ca/>



Accessibility information

Taxi Services

Taxis can usually be found easily on nearby St-Denis street, or parked on Rivard street, just west of Mont-Royal Metro Station.

Société des Transports de Montreal (STM) Help Line

The Trip Planning line number is 514 786-4636. You then need to choose option 8, and then option 4. The full number you need to dial is 514 786-4636 + 8 + 4. The business hours are: Monday to Friday: 7 a.m. to 7:30 p.m. and Saturday, Sunday and legal holidays: 8:30 a.m. to 4:30 p.m.

Paratransit Information

We are in the process of confirming the pick-up and drop-off points for OBORO. The Paratransit Help line number is 514 280-8211. Reservations can be made online at this address: <http://www.stm.info/en/para>

Teletype (TTY) for Paratransit

People who are unable to communicate verbally can use the Teletype line for Paratransit. The number is 514 280-5308.

Entering the Building and finding OBORO

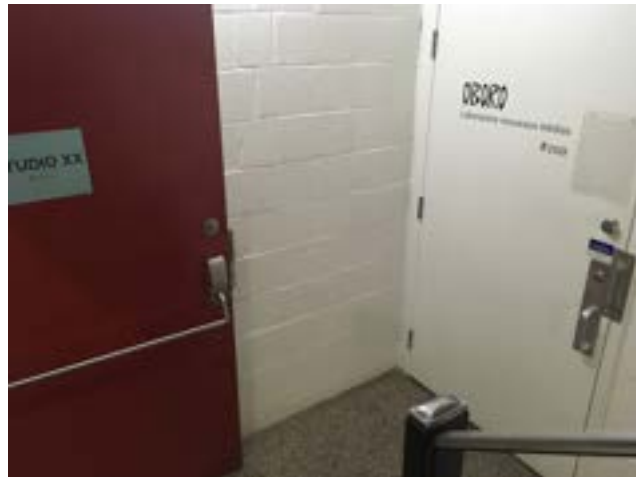
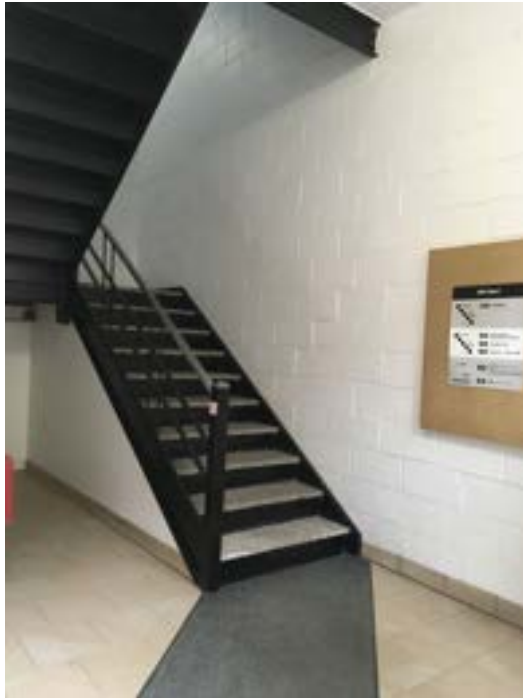
When arriving at 4001 Berri you will go up three steps to reach the main entrance. The door opens towards you (pull). Here there is no hand rail and the doorway is not adapted to wheelchair access. A ramp is available on demand (please contact us in advance), and the public may access our freight elevator only if accompanied by a member of our team.



From the building's ground floor there are 40 steps to climb up to the 3rd floor, where OBORO's exhibition spaces are situated. Divided into 4 flights of stairs, there is a landing at each 10 steps.

Our New Media Lab is located on the second floor (20 steps to climb).

These photographs give you an idea of what the climb up the stairs from the ground floor to the third floor looks like:



Visiting OBORO's Exhibition space (3rd floor)

When arriving up the stairs to the 3rd floor, choose the door to your left. Please watch your step, as there is an elevation at the threshold (2 inches/5 cm). Turn left into the hallway, or find the washroom to your right. In this hallway you will find: a billboard on the left wall with suggested cultural events, a narrow table on your right with information pertinent to OBORO's current exhibitions, a sit down area further down the corridor with two small tables, chairs, and coat racks during larger events. Beyond this entrance hall are private spaces such as our multipurpose studios, offices and conference rooms. You will find the reception area and the exhibition spaces through the opened double door on your right.



Once you have entered the double doors, you will find a reception area, open kitchen and desks on your right, the entrance to the large exhibition space on your left and a smaller exhibition space across from where you entered. During regular operating hours our staff may be working at their desks in our open office, or having lunch around a communal table near the kitchenette. Our front desk representative to your right will be happy to answer any questions you may have about the space and the exhibiting artists. There may be extra reading material available and some seating available in our front desk area.

Accessibility information

Here are some views of the entrance to the exhibition space, as seen through the main double doors (in these photos we are in the process of taking down an exhibition):



Adjacent to our exhibition space, this is what our open office looks like:





Accessibility information

Exhibitions at OBORO vary greatly in the types of mediums that are used, ranging from visual arts to emerging practices in new media and technology. Some exhibitions are well lit, but others require a space that is completely dark. Video projections and other artworks that use light as a medium will often be presented in dark spaces behind heavy curtains, for instance.

Exhibitions at OBORO can either feature many works by the same artist (solo exhibition), or a selection of works by different artists (group exhibition). Sometimes, a single artwork is presented in the gallery space.

Opening Receptions (vernissage)

During our opening receptions, the office spaces are emptied and transformed, giving way to a buffet table, a bar serving refreshments, and a children's corner for arts and crafts. These events can be crowded and filled with chatter. If you need any assistance during the opening, or access to a quiet space, please visit one of our team members at the bar and they will direct you to someone who will try to assist you the best they can.

Washrooms

Our two washrooms on the 3rd floor are single unit and gender-neutral, however they are not currently wheelchair accessible. There is a slight drop (3 inches/ 7.5 cm) at the entrance of the washroom that is located closest to the main entrance on the 3rd floor (see photos below).



Quiet Space

A designated quiet space is kept locked unless needed, and is available to members of the public upon request. Otherwise, the most quiet area at our lively openings is in the corridor leading to our conference rooms, where there is often a bench or other seating available.

Here is a view of the quiet area:



If you experience anxiety in crowded spaces, please inform our team beforehand and we can plan your visit together. If at any time you require assistance during one of our openings, a member of our team can be found behind the bar, located by the kitchen area.

Visiting OBORO's New Media Lab (2nd floor)



When going up the stairs from the ground floor to the second floor, the New Media Lab will be the door to your right. If the door is closed, you can knock or ring the doorbell located at 5 feet/155 cm from the ground to the right of the doorframe (please press down for 3 seconds).

Our New Media Lab is where equipment and studio rentals are made (by appointment only). Visit <http://www.oboro.net/en/lab> for details. There are often workshops or other public events that happen on the premises.

In the winter, we ask visitors to leave their boots on the designated mats along the wall to your right as you enter. We have a selection of slippers for you next to these mats as well as a coat rack with hangers along the same wall.



Accessibility information

On your left, you will find a set of round tables and chairs by the windows, and in a nook to your far left, a small kitchenette and a gender-neutral washroom (which is not wheelchair accessible).

Our New Media Lab team has their desks straight ahead in the back of the room, while the multi-purpose studio, where events usually take place, is on the far right. There are two low-level walls that divide the public space from the office space. There, the team may offer beverages and snacks on a table during public events.

To access the multi-purpose studio, you will open a first door, then enter a small hallway and go through a second door. Before you enter these doors, there is also a door to our recording studio located on your right. These studios have no windows and are often dimly lit, depending on the type of event taking place.



Accessibility information

Visitor Feedback

We hope you have a good time at OBORO. If you would like to share any suggestions about how we could make it easier for you to visit our spaces or participate in our activities, we would love to know about it.

Please feel free to call, email or write to us:

Phone: 514 844-3250

Email: oboro@oboro.net

Mailing address: 4001 Berri Street, #301, Montreal (Quebec)
H2L 4H2 Canada

If you are Deaf or hearing impaired and wish to communicate with us over video using sign language, please contact us using the SRV Canada VRS service: <https://srvcanadavrs.ca/en>

Thank you for your feedback!

This document was last updated on July 18, 2023.