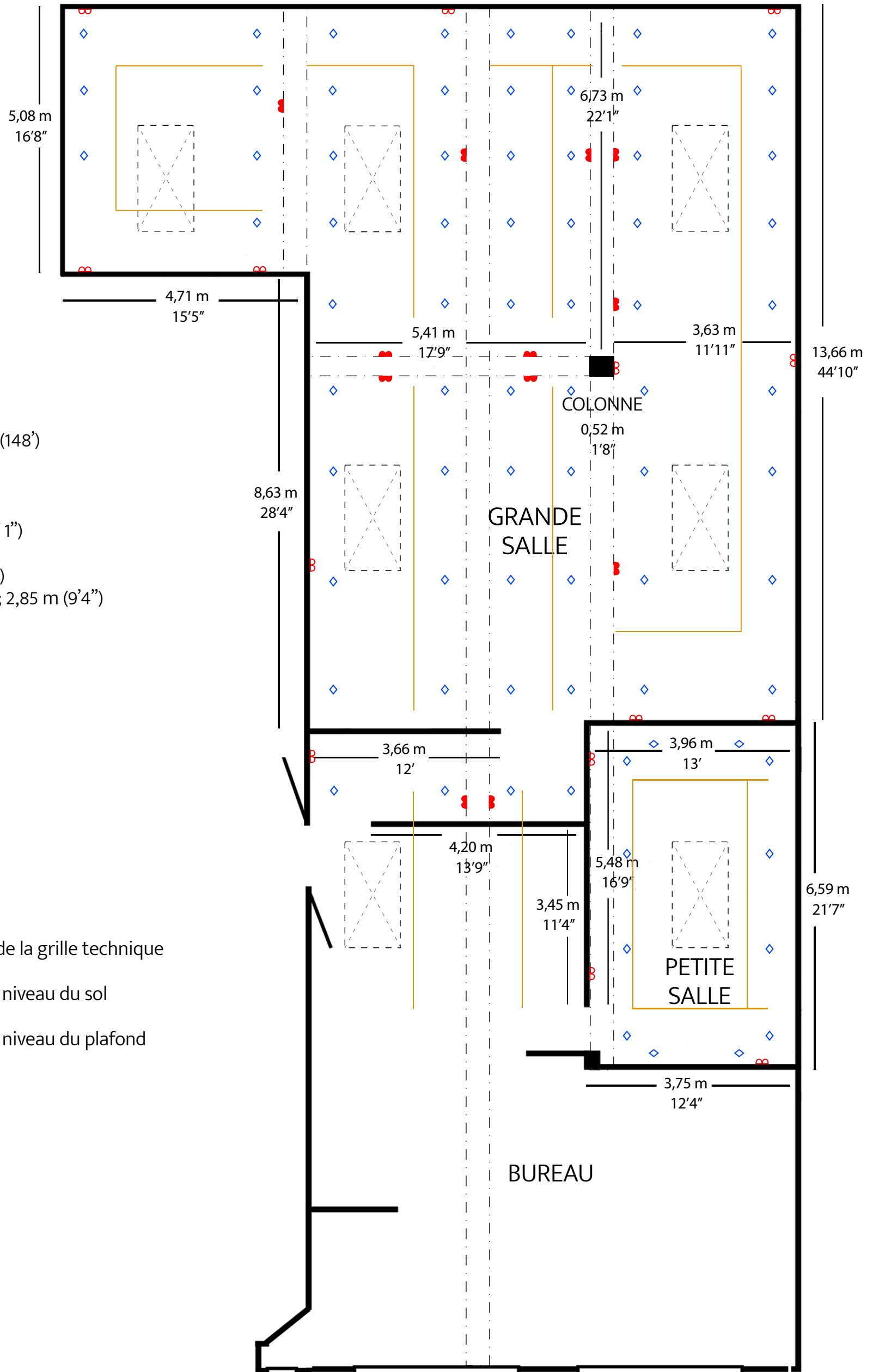


14,08 m
46'2"

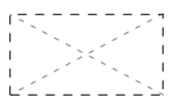
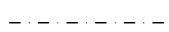






Grande salle d'exposition:
 superficie: 155 m² (1668 pi²)
 espace mural: 45 m linéaires (148')

Petite salle d'exposition:
 superficie: 27 m² (290 pi²)
 espace mural: 21 linéaires (14' 1")

Hauteur du plafond: 3,35 m (11')
 Hauteur libre sous les poutres; 2,85 m (9'4")

Légende :

-  Puits de lumière
-  Poutres d'acier
-  Rail d'éclairage
-  Points d'ancrage de la grille technique
-  Prise de courant - niveau du sol
-  Prise de courant - niveau du plafond